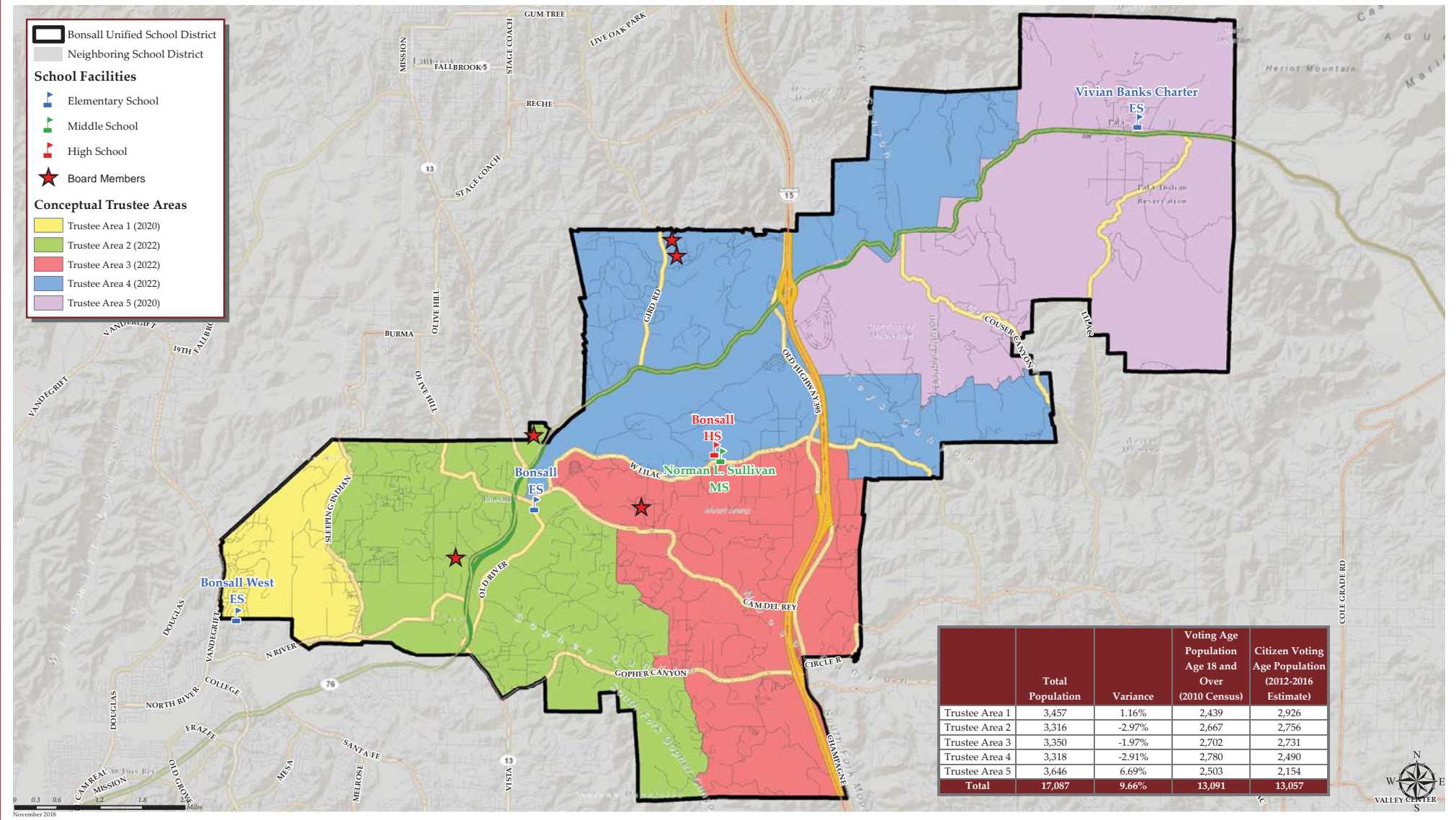


# BONSALL UNIFIED SCHOOL DISTRICT

# CONCEPTUAL TRUSTEE AREAS - SCENARIO 1



	Total Population	Variance	Voting Age Population Age 18 and Over (2010 Census)	Citizen Voting Age Population (2012-2016 Estimate)
Trustee Area 1	3,457	1.16%	2,439	2,926
Trustee Area 2	3,316	-2.97%	2,667	2,756
Trustee Area 3	3,350	-1.97%	2,702	2,731
Trustee Area 4	3,318	-2.91%	2,780	2,490
Trustee Area 5	3,646	6.69%	2,503	2,154
<b>Total</b>	<b>17,087</b>	<b>9.66%</b>	<b>13,091</b>	<b>13,057</b>



**BONSALL UNIFIED SCHOOL DISTRICT**

CONCEPTUAL TRUSTEE AREAS - SCENARIO 1

Total Population (2010 Census)						
	Trustee Area 1	Trustee Area 2	Trustee Area 3	Trustee Area 4	Trustee Area 5	Variance
Population	3,457	3,316	3,350	3,318	3,646	
Population Variance	40	-101	-67	-99	229	
	1.16%	-2.97%	-1.97%	-2.91%	6.69%	9.66%
Hispanic/Latino	872	689	742	594	1,246	
	25.22%	20.78%	22.15%	17.90%	34.17%	
White	1,697	2,312	2,368	2,518	1,422	
	49.09%	69.72%	70.69%	75.89%	39.00%	
Black/ African American	141	38	43	20	82	
	4.08%	1.15%	1.28%	0.60%	2.25%	
American Indian/ Alaska Native	5	4	20	7	558	
	0.14%	0.12%	0.60%	0.21%	15.30%	
Asian	542	160	73	103	183	
	15.68%	4.83%	2.18%	3.10%	5.02%	
Native Hawaiian/ Other Pacific Islander	58	10	5	13	19	
	1.68%	0.30%	0.15%	0.39%	0.52%	
Other	4	5	11	4	6	
	0.12%	0.15%	0.33%	0.12%	0.16%	
Two or More Races	138	98	88	59	130	
	3.99%	2.96%	2.63%	1.78%	3.57%	

Population 18 and Over (2010 Census)						
	Trustee Area 1	Trustee Area 2	Trustee Area 3	Trustee Area 4	Trustee Area 5	
Population	2,439	2,667	2,702	2,780	2,503	
Population Variance	-179	49	84	162	-115	
	-6.84%	1.86%	3.20%	6.18%	-4.40%	
Hispanic/Latino	559	490	512	411	784	
	22.92%	18.37%	18.95%	14.78%	31.32%	
White	1,237	1,955	2,020	2,206	1,049	
	50.72%	73.30%	74.76%	79.35%	41.91%	
Black/ African American	106	22	35	16	61	
	4.35%	0.82%	1.30%	0.58%	2.44%	
American Indian/ Alaska Native	5	4	17	7	366	
	0.21%	0.15%	0.63%	0.25%	14.62%	
Asian	422	136	62	93	157	
	17.30%	5.10%	2.29%	3.35%	6.27%	
Native Hawaiian/ Other Pacific Islander	44	8	4	8	17	
	1.80%	0.30%	0.15%	0.29%	0.68%	
Other	2	4	6	4	4	
	0.08%	0.15%	0.22%	0.14%	0.16%	
Two or More Races	64	48	46	35	65	
	2.62%	1.80%	1.70%	1.26%	2.60%	

Citizens by Voting Age Population Estimate (2012-2016)						
	Trustee Area 1	Trustee Area 2	Trustee Area 3	Trustee Area 4	Trustee Area 5	
Population	2,926	2,756	2,731	2,490	2,154	
Population Variance	315	145	120	-121	-457	
	12.05%	5.54%	4.58%	-4.65%	-17.52%	
Hispanic/Latino	609	418	545	327	512	
	20.81%	15.17%	19.96%	13.13%	23.77%	
White	1,703	2,024	1,948	1,909	1,218	
	58.20%	73.44%	71.33%	76.67%	56.55%	
Black/ African American	120	131	34	5	58	
	4.10%	4.75%	1.24%	0.20%	2.69%	
American Indian/ Alaska Native	0	1	19	7	253	
	0.00%	0.04%	0.70%	0.28%	11.75%	
Asian	474	150	121	120	57	
	16.20%	5.44%	4.43%	4.82%	2.65%	
Native Hawaiian/ Other Pacific Islander	0	0	14	0	5	
	0.00%	0.00%	0.51%	0.00%	0.23%	
Other	0	0	0	0	0	
	0.00%	0.00%	0.00%	0.00%	0.00%	
Two or More Races	20	32	50	122	51	
	0.68%	1.16%	1.83%	4.90%	2.37%	