



South County SELPA

# ALTERNATIVE DISPUTE RESOLUTION

## EDUCATOR NEWSLETTER



### Tips for Effective Communication

- ***Make space for everyone to talk:*** Collaboration breeds creativity. If everyone in the space is able to freely share their ideas imagine all the new ways of looking at things!
- ***Practice Active Listening:*** Go beyond just listening to others words and listen for understanding! Helpful ways to achieve this include asking open ended questions, summarizing the speakers points, and avoiding judgment.

### Welcome

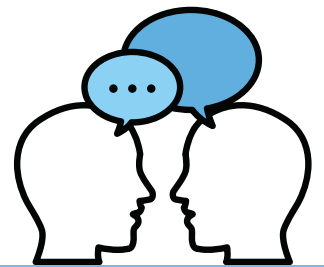
Welcome to our June Alternative Dispute Resolution (ADR) Newsletter! This month we are focusing on parent involvement. Bringing our readers important information about one of the services offered by the South County SELPA, as well as tips and tricks on working together, and a great read on the importance of parent and teacher communication.

### Parent to Parent Support

Parent to Parent Support is a great way for parents of students with special needs to feel supported and have their questions or concerns addressed by individuals with knowledge of the special education system. The South County SELPA values family involvement in education and is continuously working to make getting help easy and accessible. That mission is made possible through the hard work of the South County SELPA Resource Parents Liliana Armenta and Laura Cervantes who have been helping parents for over 20 years. Our Resource Parents have extensive training to help parents and caretakers of students with disabilities. Some services offered include reviewing the IEP, addressing parent concerns, assisting in understanding needs, offering support, attending IEP meetings, and collaborating with parents and school districts.

**Learn more on our website.**

**Here is a great article about active listening.**



### UPCOMING:

July 15th: Special Needs Foundation's "All Inclusive Day of Play and Resource Fair"

Get tickets to the free event [here](#)



[www.sdcoe.net/scselpa-adr](http://www.sdcoe.net/scselpa-adr)



10 L Street Ste. E Chula Vista, CA 91911 858-190-8510

