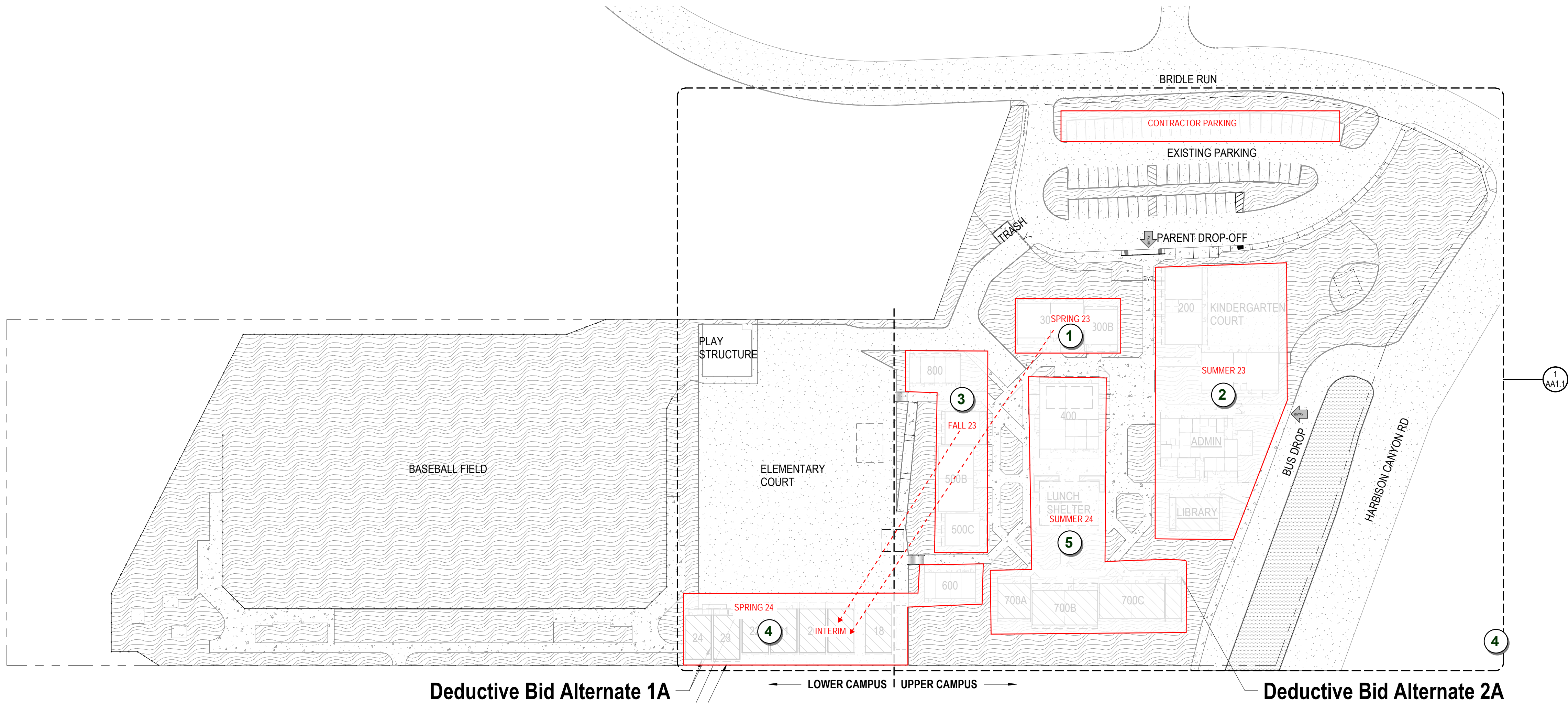


2 SITE PLAN - OVERALL 1"=60'

staging areas will have to move around as phases are completed



Deductive Bid Alternate 1A
Deductive Bid Alternate 1B
Deductive Bid Alternate 1C

Deductive Bid Alternate 2A

GENERAL NOTES:
The scope of this project is new metal siding for all buildings on campus including the 8 relocatable classrooms.
The total SF of metal siding required is minimum **42,966.5 SF** and 10,758 for the soffit ceilings.

See rendering below for school-wide color scheme.



COLORS:
Stock:
SOFFIT WALLS: DOVE GREY: 11,118.8/ 42,966.5 ~ 25.9%
WALLS: REGAL BLUE: 29,847.7/ 42,966.5 ~ 74.1%

BID OPTIONS:
Base Bid: All work identified as Scope of Work for Phase 1 (see sheet T1.1 Scope of Work)
Base Bid: Upper + Lower Campus metal siding, & Upper + Lower Campus metal soffit ceilings.
New 31,897 SF metal siding Upper Campus.
New 7,398 SF metal soffits at Upper Campus.
New 11,070 SF metal siding at Lower Campus.
New 1,008 SF metal soffits at Lower Campus.
Deductive Bid Alternate 1A: Excludes metal siding @ back side of Lower Campus
Deduct from base bid 2,546 SF metal siding Lower Campus (No metal siding at back wall).
Deductive Bid Alternate 1B: Excludes metal soffit ceilings @ Lower Campus.
Deduct from base bid 1,008 SF of metal soffit at Lower Campus.
Deductive Bid Alternate 1C: Excludes metal siding & metal soffit ceilings @ Lower Campus.
Deduct from base 11,070 SF metal siding Lower Campus.
Deduct from base bid 1,008 SF of metal soffit at Lower Campus.
Deductive Bid Alternate 2A: Excludes metal soffit ceilings @ Upper Campus.
Deduct from base bid 7,398 SF of metal soffit at Upper Campus.

BUILDING FLOOR TYPE	
	(E) SLAB ON GRADE
	(E) RAISED WOOD FLOOR
FLOOR FINISH LEGEND	
	(E) SEALED CONCRETE
	NEW SEALED CONCRETE
	(E) ASPHALT
	(E) GRASS
	(E) LANDSCAPE

PHASE 1 SCOPE OF WORK
INCLUDES ALL WORK REFERENCED THIS SHEET

DSA STAMP

IDENTIFICATION STAMP
DIV. OF THE STATE ARCHITECT
APP: 04-120389 INC:
REVIEWED FOR
SS ☒ FLS ☒ ACS ☒
DATE: 03/01/2022

Issue Date:
Phase 1 Bid Issue 3/29/22

Revisions:
1
2
3

Drawn By/Checked:
Author

Consultant:

san diego county office of
EDUCATION
FUTURE WITHOUT BOUNDARIES™

ALPINE UNION SCHOOL DISTRICT
FOR EDUCATION, INNOVATION, AND INSPIRATION

Creekside Early Learning Center
New Metal Siding
MODULAR CLASSROOMS 2021
for
ALPINE UNION SCHOOL DISTRICT
SAN DIEGO CALIFORNIA

LICENSED ARCHITECT
No. C20789
STATE OF CALIFORNIA
REN. 02-28-23

MGPA ARCHITECTURE
An Architectural Corporation
Mailing: 6965 El Camino Real, Suites 105-278
Carlsbad, CA 92009
Tele: (760) 929-1500 Fax: (760) 929-1506

MGPA
ARCHITECTURE

PHASE 1
OVERALL SITE PLAN

Sheet Number:

AA1.0